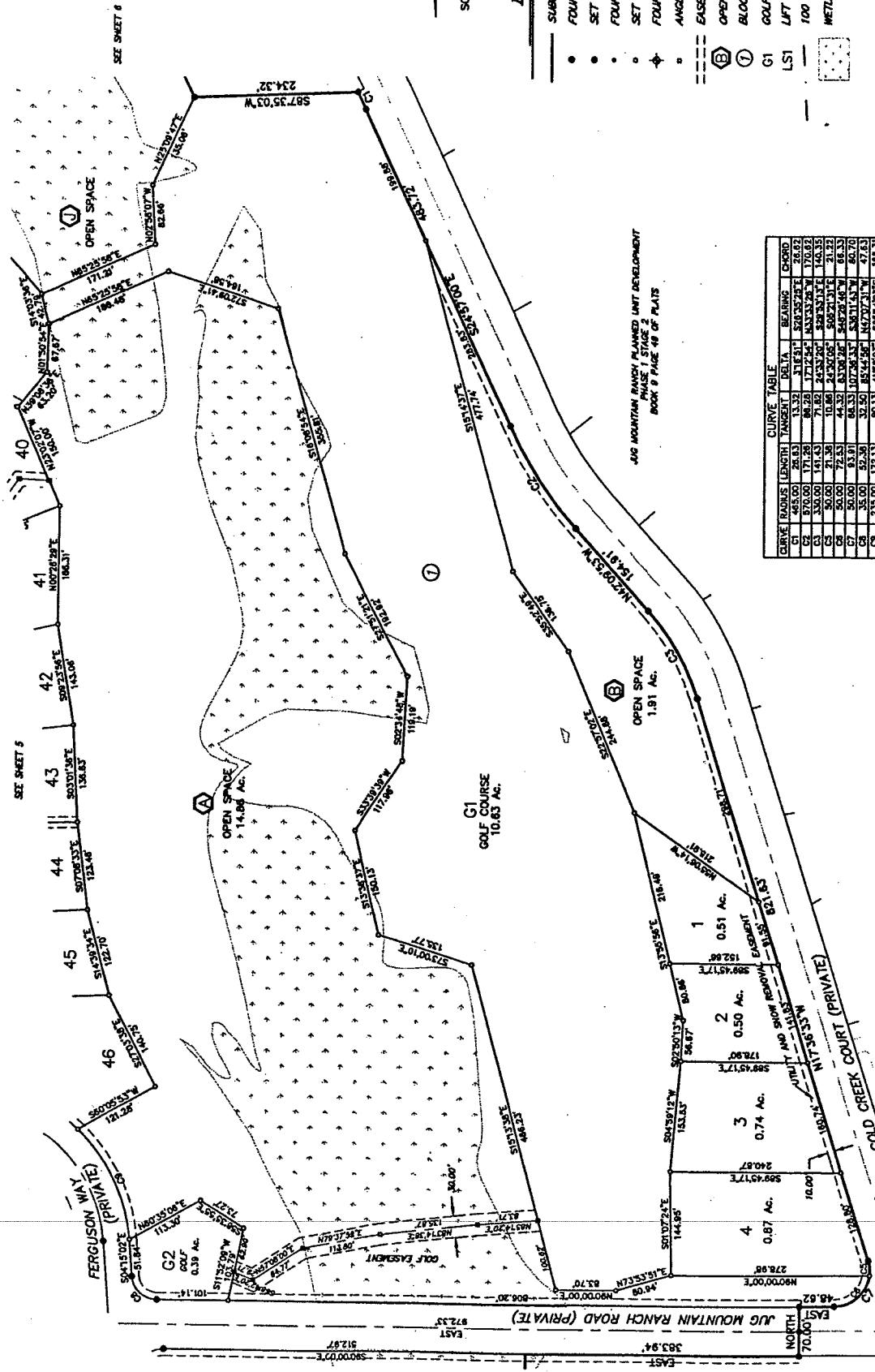


JUG MOUNTAIN RANCH PLANNED UNIT DEVELOPMENT PHASE 2

Located in the E 1/2 of Section 1 and the N 1/2 of the NE 1/4 of Section 12, T.17N., R.3E., and the W 1/2 of Section 6, T.17N., R.4E., B.M. Valley County, Idaho



LEGEND

- SUBDIVISION BOUNDARY
- FOUND 5/8" X 30" REBAR MKD LS 6577
- FOUND 1/2" X 24" REBAR MKD LS 6577
- FOUND BRASS CAP MONUMENT
- ANGLE POINT - NOTHING SET
- EASEMENT LINE
- ⊞ OPEN SPACE PARCEL
- ⊞ BLOCK NUMBER
- G1 GOLF COURSE LOT
- LS1 LIFT STATION LOT
- 100 YEAR FLOOD LINE
- WETLANDS

CURVE TABLE

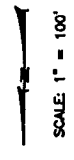
CURVE	RADIUS	LENGTH	TANGENT	DELTA	BEARING	CHORD
G1	445.00	24.63	13.32	31.631°	S24.52°24.63	28.92
G2	570.00	171.28	84.28	171.244°	N33.33°24.63	170.92
G3	300.00	141.43	71.82	24.532°	S28.531°24.63	140.35
G4	50.00	71.39	10.86	24.505°	S28.531°24.63	21.22
G5	50.00	71.39	10.86	63.338°	S28.531°24.63	66.23
G6	35.00	42.34	32.50	61.248°	S28.531°24.63	47.13
G7	235.00	172.13	80.13	61.248°	S28.531°24.63	164.31

SECESH ENGINEERING, INC.
McCall, Idaho

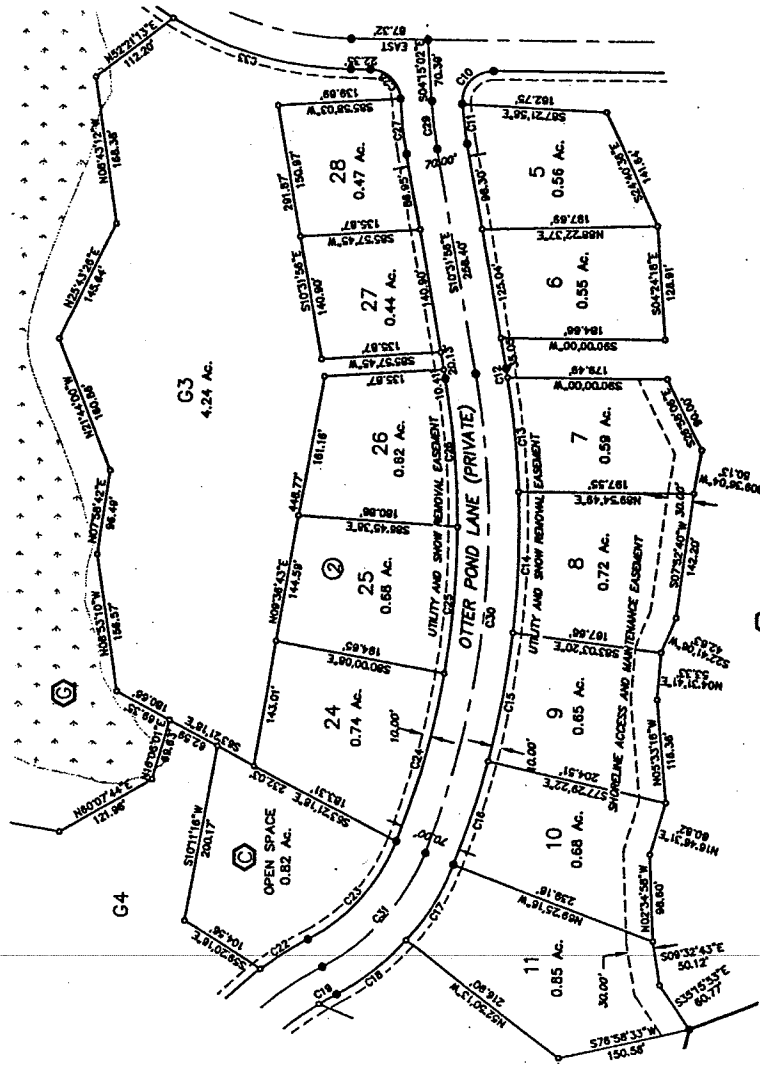
JUG MOUNTAIN RANCH PLANNED UNIT DEVELOPMENT PHASE 2

Located in the E 1/2 of Section 1 and the N 1/2 of Section 12, T.17N., R.3E., and the W 1/2 of Section 6, T.17N., R.4E., B.M. Valley County, Idaho

CURVE	RADIUS	LENGTH	TANGENT	DELTA	BEARING	CHORD
C10	485.00	27.48	38.14	84.55	N42°32'26"E	51.36
C11	485.00	27.48	38.14	84.55	N07°43'30"W	45.35
C12	1035.00	10.71	6.38	37.47	S01°10'09"E	10.71
C13	1035.00	10.71	6.38	37.47	S01°10'09"E	10.71
C14	1035.00	159.06	60.09	675.54	S01°53'37"W	159.70
C15	1035.00	147.42	73.84	670.40	S10°3'56"W	147.30
C16	1035.00	122.86	61.50	638.05	S17°42'48"W	122.79
C17	285.00	107.19	51.93	207.03	S31°17'05"W	100.65
C18	285.00	107.19	51.93	207.03	S51°37'06"W	100.57
C19	335.00	22.86	11.33	33.74	S60°00'00"E	22.86
C20	335.00	22.86	11.33	33.74	S60°00'00"E	22.86
C21	215.00	152.40	76.97	672.37	S57°34'53"E	152.40
C22	215.00	152.40	76.97	672.37	S17°02'31"W	152.40
C23	965.00	166.85	83.84	674.24	S04°28'56"W	166.65
C24	965.00	166.85	83.84	674.24	S06°30'06"E	166.23
C25	335.00	22.86	11.33	33.74	S29°37'40"E	22.86
C26	335.00	22.86	11.33	33.74	S48°31'15"E	22.86
C27	335.00	22.86	11.33	33.74	S67°23'29"W	22.86
C28	335.00	22.86	11.33	33.74	S86°17'27"W	22.86
C29	250.00	177.44	92.64	672.37	S85°17'27"W	177.44
C30	250.00	177.44	92.64	672.37	S24°38'31"W	177.44
C31	410.00	215.00	110.03	607.02	N24°38'31"W	212.54



- LEGEND**
- SUBDIVISION BOUNDARY
 - FOUND 5/8" IRON PIN
 - SET 5/8" X 30" REBAR MID LS 8577
 - FOUND 1/2" IRON PIN
 - SET 1/2" X 24" REBAR MID LS 8577
 - ◆ FOUND BRASS CAP MONUMENT
 - ANGLE POINT - NOTHING SET
 - EASEMENT LINE
 - Ⓟ OPEN SPACE PARCEL
 - Ⓡ BLOCK NUMBER
 - G1 GOLF COURSE LOT
 - LS1 LIFT STATION LOT
 - 100 YEAR FLOOD LINE
 - Ⓜ METLAMS

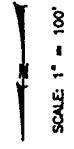


SECRETSH ENGINEERING, INC.
McCall, Idaho

JUG MOUNTAIN RANCH PLANNED UNIT DEVELOPMENT PHASE 2

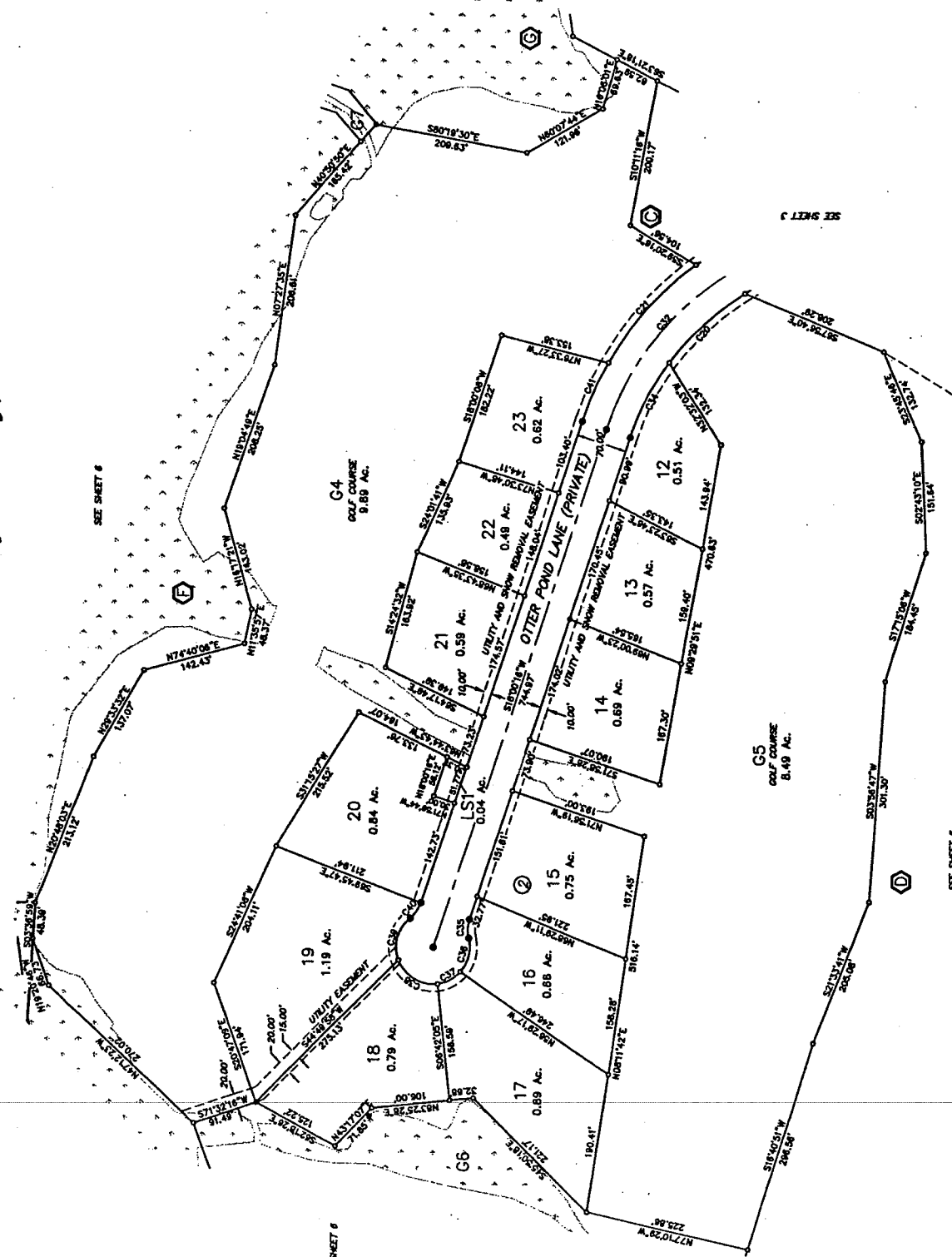
Located in the E 1/2 of Section 1 and the N 1/2 of the NE 1/4 of Section 12, T.17N., R.3E., and the W 1/2 of Section 6, T.17N., R.4E., B.M. Valley County, Idaho

CURVE	RADIUS	LENGTH	TANGENT	DELTA	BEARING	CHORD
C10	345.00	142.24	70.99	22.0050°	N47°13'01"E	139.36
C11	335.00	160.59	81.01	23.9704°	N41°57'43"E	178.29
C12	345.00	315.92	160.70	43.9638°	N33°33'41"E	248.24
C13	345.00	216.63	111.19	31.7111°	N47°08'40"E	151.29
C14	345.00	216.63	111.19	31.7111°	N47°08'40"E	151.29
C15	50.00	44.87	22.44	25.9440°	S12°13'09"W	48.77
C16	50.00	34.23	16.89	41.2043°	S01°53'28"W	35.44
C17	50.00	64.30	39.04	75.3611°	N59°24'04"W	61.55
C18	50.00	64.30	39.04	75.3611°	N59°24'04"W	61.55
C19	50.00	25.83	13.17	37.3613°	N43°19'43"W	25.23
C20	45.00	25.83	13.17	37.3613°	N43°19'43"W	25.23
C21	45.00	87.50	44.09	119.9383°	N23°47'13"E	87.85



LEGEND

- SUBMISSION BOUNDARY
- FOUND 5/8" IRON PW
- SET 5/8" X 30" REBAR MKD LS 8577
- FOUND 1/2" IRON PW
- SET 1/2" X 24" REBAR MKD LS 8577
- ◆ FOUND BRASS CAP MONUMENT
- ANGLE POINT - NOTHING SET
- EASEMENT LINE
- ⊞ OPEN SPACE PARCEL
- ① BLOCK NUMBER
- G1 GOLF COURSE LOT
- LS1 LIFT STATION LOT
- 100 YEAR FLOOD LINE
- ▨ WETLANDS



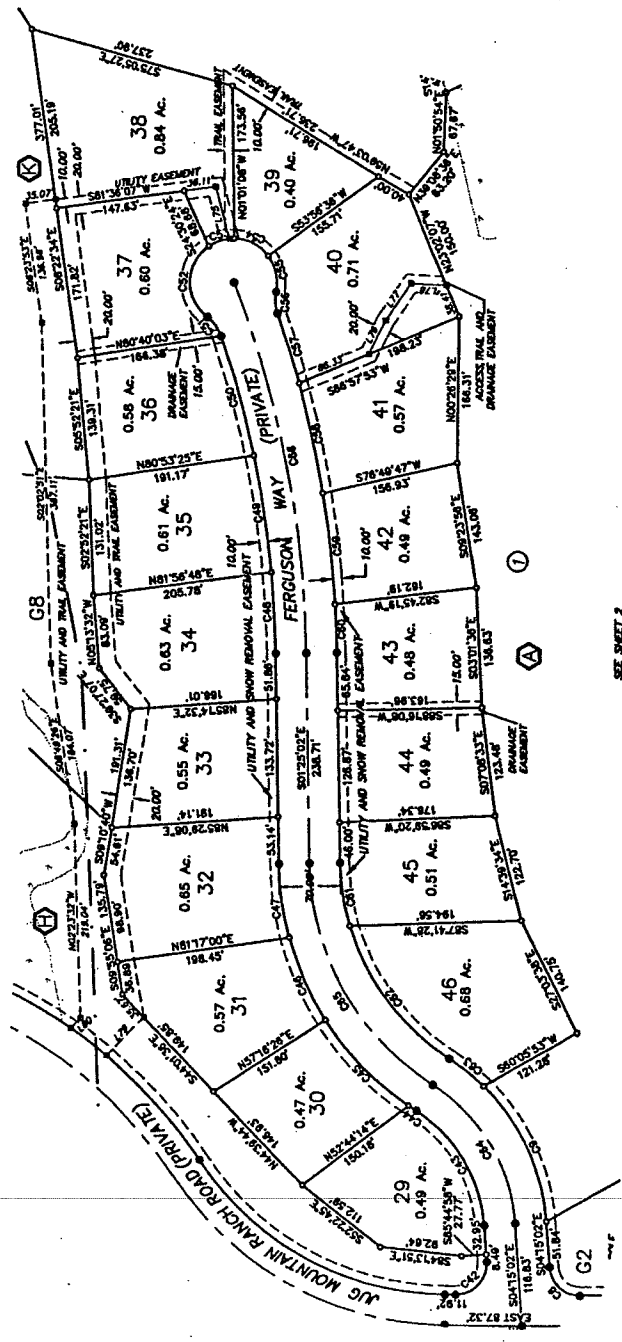
SECURESH ENGINEERING, INC.
McCall, Idaho

JUG MOUNTAIN RANCH PLANNED UNIT DEVELOPMENT PHASE 2

Located in the E 1/2 of Section 1 and the N 1/2 of the NE 1/4 of Section 12, T.17N., R.3E., and the W 1/2 of Section 6, T.17N., R.4E., B.M. Valley County, Idaho

LINE	LENGTH	BEARING
L75	81.06	N152°24'56"W
L76	47.82	S88°36'03"W
L77	47.82	S88°36'03"W
L78	40.70	N87°24'14"W
L79	61.84	N45°08'30"E
L80	15.48	N45°08'30"E

CURVE	RADIUS	LENGTH	TANGENT	DELTA	BEARING	CHORD
C8	35.00	51.36	31.50	85°54'59"	N17°07'21"W	47.63
C9	235.00	172.13	95.13	41°56'03"	S25°15'02"E	166.31
C10	35.00	51.36	31.50	85°54'59"	S25°15'02"E	47.63
C11	35.00	51.36	31.50	85°54'59"	S25°15'02"E	47.63
C12	35.00	51.36	31.50	85°54'59"	S25°15'02"E	47.63
C13	35.00	51.36	31.50	85°54'59"	S25°15'02"E	47.63
C14	35.00	51.36	31.50	85°54'59"	S25°15'02"E	47.63
C15	35.00	51.36	31.50	85°54'59"	S25°15'02"E	47.63
C16	35.00	51.36	31.50	85°54'59"	S25°15'02"E	47.63
C17	35.00	51.36	31.50	85°54'59"	S25°15'02"E	47.63
C18	35.00	51.36	31.50	85°54'59"	S25°15'02"E	47.63
C19	35.00	51.36	31.50	85°54'59"	S25°15'02"E	47.63
C20	35.00	51.36	31.50	85°54'59"	S25°15'02"E	47.63
C21	35.00	51.36	31.50	85°54'59"	S25°15'02"E	47.63
C22	35.00	51.36	31.50	85°54'59"	S25°15'02"E	47.63
C23	35.00	51.36	31.50	85°54'59"	S25°15'02"E	47.63
C24	35.00	51.36	31.50	85°54'59"	S25°15'02"E	47.63
C25	35.00	51.36	31.50	85°54'59"	S25°15'02"E	47.63
C26	35.00	51.36	31.50	85°54'59"	S25°15'02"E	47.63
C27	35.00	51.36	31.50	85°54'59"	S25°15'02"E	47.63
C28	35.00	51.36	31.50	85°54'59"	S25°15'02"E	47.63
C29	35.00	51.36	31.50	85°54'59"	S25°15'02"E	47.63
C30	35.00	51.36	31.50	85°54'59"	S25°15'02"E	47.63
C31	35.00	51.36	31.50	85°54'59"	S25°15'02"E	47.63
C32	35.00	51.36	31.50	85°54'59"	S25°15'02"E	47.63
C33	35.00	51.36	31.50	85°54'59"	S25°15'02"E	47.63
C34	35.00	51.36	31.50	85°54'59"	S25°15'02"E	47.63
C35	35.00	51.36	31.50	85°54'59"	S25°15'02"E	47.63
C36	35.00	51.36	31.50	85°54'59"	S25°15'02"E	47.63



SCALE: 1" = 100'

LEGEND

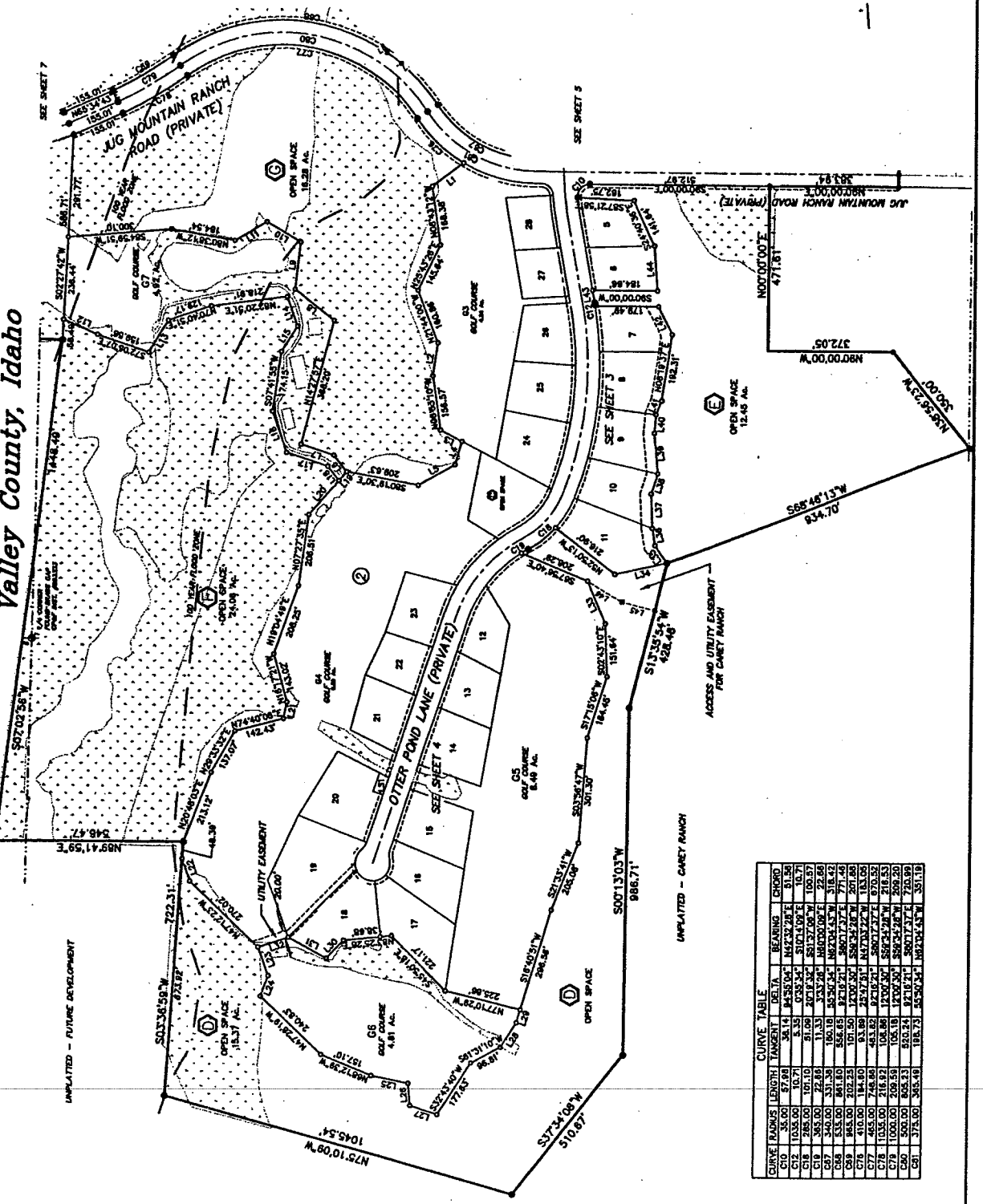
- SUBDIVISION BOUNDARY
- FOUND 5/8" X 30" REBAR AND LS 6577
- FOUND 1/2" X 24" IRON PIN
- SET 1/2" X 24" REBAR AND LS 6577
- FOUND BRASS CAP MONUMENT
- ANGLE POINT - NOTHING SET
- EASEMENT LINE
- OPEN SPACE PARCEL
- BLOCK NUMBER
- GOLF COURSE LOT
- LIFT STATION LOT
- 100 YEAR FLOOD LINE
- WETLANDS

SECESH ENGINEERING, INC.
McCall, Idaho

JUG MOUNTAIN RANCH PLANNED UNIT DEVELOPMENT PHASE 2

Located in the E 1/2 of Section 1 and the N 1/2 of the NE 1/4 of Section 12, T.17N., R.3E., and the SW 1/4 of Section 6, T.17N., R.4E., B.M. Valley County, Idaho

LINE	LENGTH	BEARING
L1	112.20	N52°21'13"E
L2	68.48	N07°28'42"E
L3	68.35	S63°21'18"E
L4	118.83	N18°06'01"E
L5	59.32	N01°07'42"E
L6	100.33	N72°23'16"W
L7	144.53	N62°23'44"W
L8	135.84	N08°20'32"E
L9	112.65	N60°01'37"W
L10	102.78	S88°32'11"W
L11	102.26	N05°25'24"E
L12	102.26	N05°25'24"E
L13	102.26	N05°25'24"E
L14	89.27	S18°21'41"E
L15	68.60	S31°40'23"W
L16	123.98	S19°40'23"E
L17	125.43	N72°55'15"W
L18	51.72	N88°58'42"W
L19	33.48	N05°50'50"E
L20	44.37	N05°50'50"E
L21	66.73	N19°10'48"W
L22	66.73	N19°10'48"W
L23	66.32	N02°17'56"W
L24	62.28	N02°17'56"W
L25	110.14	N79°11'54"W
L26	63.48	N05°27'54"W
L27	66.37	N72°47'58"W
L28	66.37	N72°47'58"W
L29	58.63	S18°45'31"E
L30	71.85	N43°17'07"E
L31	128.22	S62°18'30"E
L32	91.49	S71°32'18"W
L33	129.74	S92°55'45"E
L34	106.98	S73°58'37"E
L35	50.17	S85°13'53"E
L36	50.17	S85°13'53"E
L37	88.60	N02°24'58"W
L38	80.82	N18°46'31"E
L39	116.38	N05°33'18"W
L40	53.33	N62°31'51"E
L41	42.83	S22°21'00"W
L42	53.05	S03°38'00"E
L43	53.05	S03°38'00"E
L44	128.81	S62°28'18"E



SCALE: 1" = 200'

LEGEND

- - - SUBMISSION BOUNDARY
- FOUND 5/8" X 30" REBAR AND LS 8577
- FOUND 1/2" X 30" REBAR AND LS 8577
- FOUND 1/2" X 24" REBAR AND LS 8577
- FOUND BRASS CAP MARKING
- ◻ ANGLE POINT - NOTHING SET
- - - EASEMENT LINE
- ⊕ OPEN SPACE PARCEL
- Ⓣ BLOCK NUMBER
- 100 YEAR FLOOD LINE
- ▨ WETLANDS

SEGESCH ENGINEERING, INC.
McCall, Idaho

CURVE	BEARING	LENGTH	DELTA	CHORD
C10	104.54°	67.94	135.88	135.88
C11	103.50°	10.71	21.42	21.42
C12	103.50°	10.71	21.42	21.42
C13	103.50°	10.71	21.42	21.42
C14	103.50°	10.71	21.42	21.42
C15	103.50°	10.71	21.42	21.42
C16	103.50°	10.71	21.42	21.42
C17	103.50°	10.71	21.42	21.42
C18	103.50°	10.71	21.42	21.42
C19	103.50°	10.71	21.42	21.42
C20	103.50°	10.71	21.42	21.42
C21	103.50°	10.71	21.42	21.42
C22	103.50°	10.71	21.42	21.42
C23	103.50°	10.71	21.42	21.42
C24	103.50°	10.71	21.42	21.42
C25	103.50°	10.71	21.42	21.42
C26	103.50°	10.71	21.42	21.42
C27	103.50°	10.71	21.42	21.42
C28	103.50°	10.71	21.42	21.42
C29	103.50°	10.71	21.42	21.42
C30	103.50°	10.71	21.42	21.42

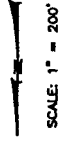
JUG MOUNTAIN RANCH PLANNED UNIT DEVELOPMENT PHASE 2

Located in the E 1/2 of Section 1 and the N 1/2 of the NE 1/4 of Section 12, T.17N., R.3E., and the W 1/2 of Section 6, T.17N., R.4E., B.M. Valley County, Idaho

CURVE	RADIUS	LENGTH	TANGENT	DELTA	BEARING	CHORD
C42	35.00	57.57	37.70	84.1500°	84.3242°	51.30
C47	340.00	31.36	180.18	85.5014°	86.0745°	314.42
C48	333.00	50.30	55.83	87.1821°	88.0737°	771.45
C49	315.00	62.25	101.50	10.0030°	50.5728°	201.86
C50	315.00	60.00	58.14	17.9177°	57.9331°	225.58
C51	315.00	145.00	74.92	28.2432°	61.4615°	444.17
C72	485.00	73.17	36.85	87.4818°	87.9430°	731.00
C74	485.00	135.32	68.10	18.3810°	84.4063°	134.88
C75	415.00	69.70	34.89	67.271°	68.4231°	69.87
C76	415.00	178.40	48.82	87.121°	88.0737°	670.52
C78	415.00	148.86	104.18	12.0030°	50.5728°	218.53
C79	415.00	203.58	104.18	12.0030°	50.5728°	218.53
C80	500.00	203.58	104.18	12.0030°	50.5728°	218.53
C81	375.00	305.49	187.73	25.2014°	60.7045°	351.19
C82	315.00	315.25	187.07	45.2457°	58.1010°	308.53
C83	415.00	178.40	96.69	42.9747°	57.9430°	177.03
C84	415.00	178.40	96.69	18.3810°	47.9331°	177.03
C85	315.00	144.71	74.92	17.9177°	57.9331°	225.58
C86	315.00	144.71	74.92	17.9177°	57.9331°	225.58
C87	315.00	145.00	74.92	17.9177°	57.9331°	225.58
C88	55.00	77.37	46.84	80.3547°	84.2814°	71.14
C89	205.00	161.78	63.13	38.2124°	50.5728°	159.61
C91	485.00	38.88	19.49	43.729°	45.2457°	38.87

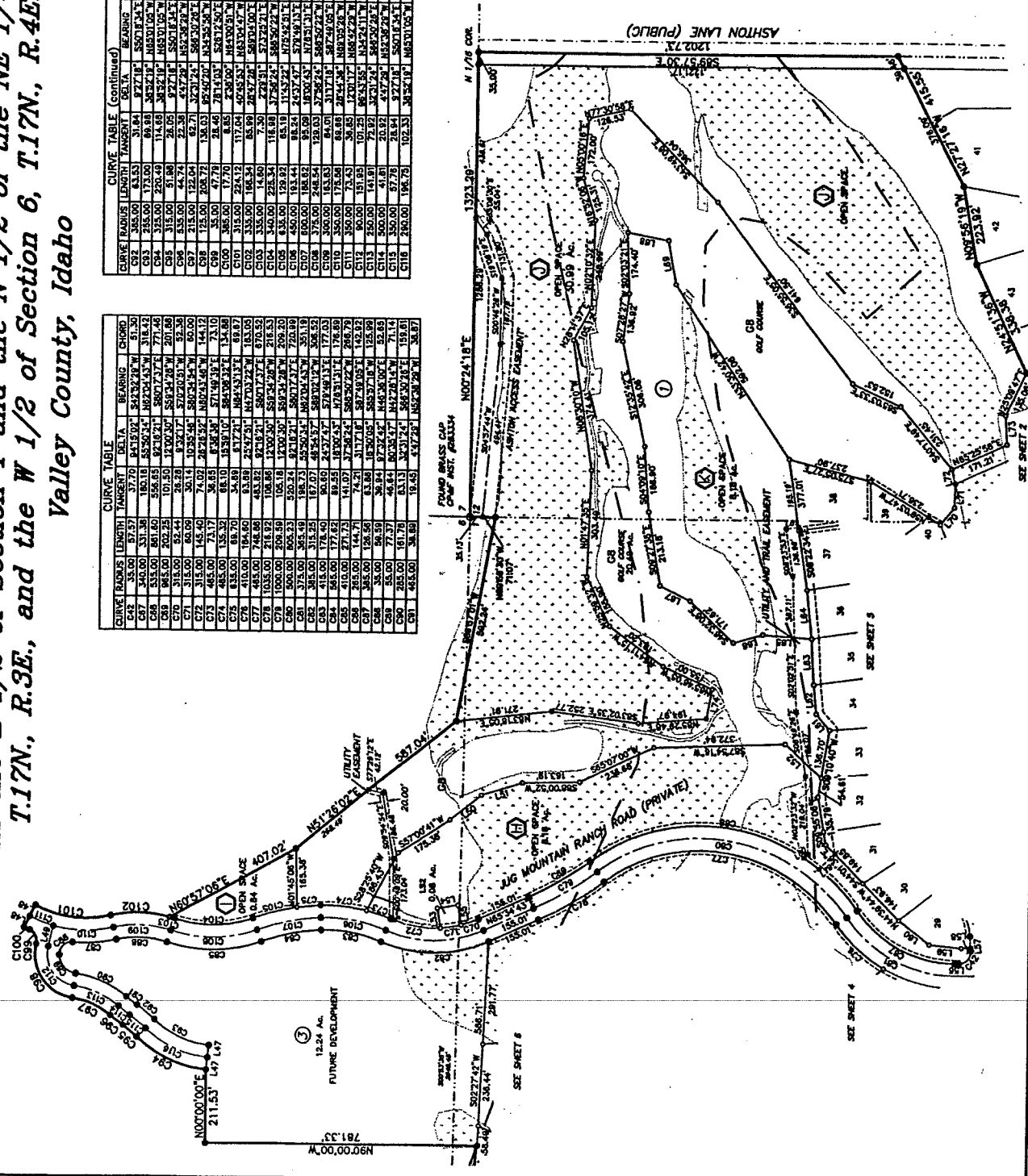
CURVE	RADIUS	LENGTH	TANGENT	DELTA	BEARING	CHORD
C92	345.00	63.53	31.84	87.718°	88.0737°	63.46
C93	235.00	173.00	99.88	85.5218°	86.0745°	189.20
C94	335.00	220.49	114.68	85.5218°	86.0745°	218.29
C95	315.00	61.98	28.05	87.718°	88.0737°	61.92
C96	335.00	44.74	22.36	47.978°	48.3528°	44.73
C97	115.00	122.94	62.71	82.9724°	85.5218°	120.41
C98	115.00	47.76	23.82	81.138°	81.138°	47.76
C99	385.00	174.70	84.85	17.041°	58.1010°	174.70
C100	315.00	224.12	117.04	40.8583°	40.8583°	218.52
C102	335.00	165.34	85.99	28.2432°	58.1010°	165.34
C103	335.00	14.00	7.30	22.914°	57.9331°	14.00
C104	340.00	223.34	118.88	37.8224°	37.8224°	221.84
C105	435.00	124.92	65.18	17.4522°	17.4522°	124.92
C106	435.00	124.92	65.18	17.4522°	17.4522°	124.92
C107	600.00	184.62	85.69	23.9747°	23.9747°	244.40
C108	375.00	248.54	123.03	32.7824°	32.7824°	244.40
C109	300.00	183.83	84.01	31.1718°	31.1718°	183.83
C110	350.00	178.08	88.48	28.448°	28.448°	173.75
C111	350.00	178.08	88.48	28.448°	28.448°	173.75
C112	350.00	178.08	88.48	28.448°	28.448°	173.75
C113	350.00	178.08	88.48	28.448°	28.448°	173.75
C114	500.00	41.81	20.92	38.2124°	38.2124°	41.81
C115	350.00	87.78	21.84	87.718°	88.0737°	87.78
C116	290.00	198.70	102.33	34.8518°	34.8518°	193.00

LINE	TABLE
L45	115.31
L46	115.31
L47	35.00
L48	35.00
L49	59.82
L50	112.78
L51	121.38
L52	121.38
L53	60.00
L54	56.69
L55	56.69
L56	11.92
L57	8.49
L58	27.77
L59	95.64
L60	56.69
L61	56.69
L62	63.09
L63	63.09
L64	139.31
L65	139.31
L66	66.86
L67	66.86
L68	119.87
L69	119.87
L70	63.26
L71	63.26
L72	62.79
L73	62.79
L74	62.79
L75	62.79
L76	15.48
L77	15.48
L78	35.07



LEGEND

- SUBDIVISION BOUNDARY
- FOUND 5/8" X 30" REBAR AND LS 8577
- SET 5/8" X 30" REBAR AND LS 8577
- FOUND 1/2" IRON PIN
- SET 1/2" X 24" REBAR AND LS 8577
- ◆ FOUND BRASS CAP MONUMENT
- ANGLE POINT - NOTHING SET
- EASEMENT LINE
- Ⓟ OPEN SPACE PARCEL
- Ⓛ BLOCK NUMBER
- 100 YEAR FLOOD LINE
- METLANDS



SECESH ENGINEERING, INC.
McCall, Idaho

